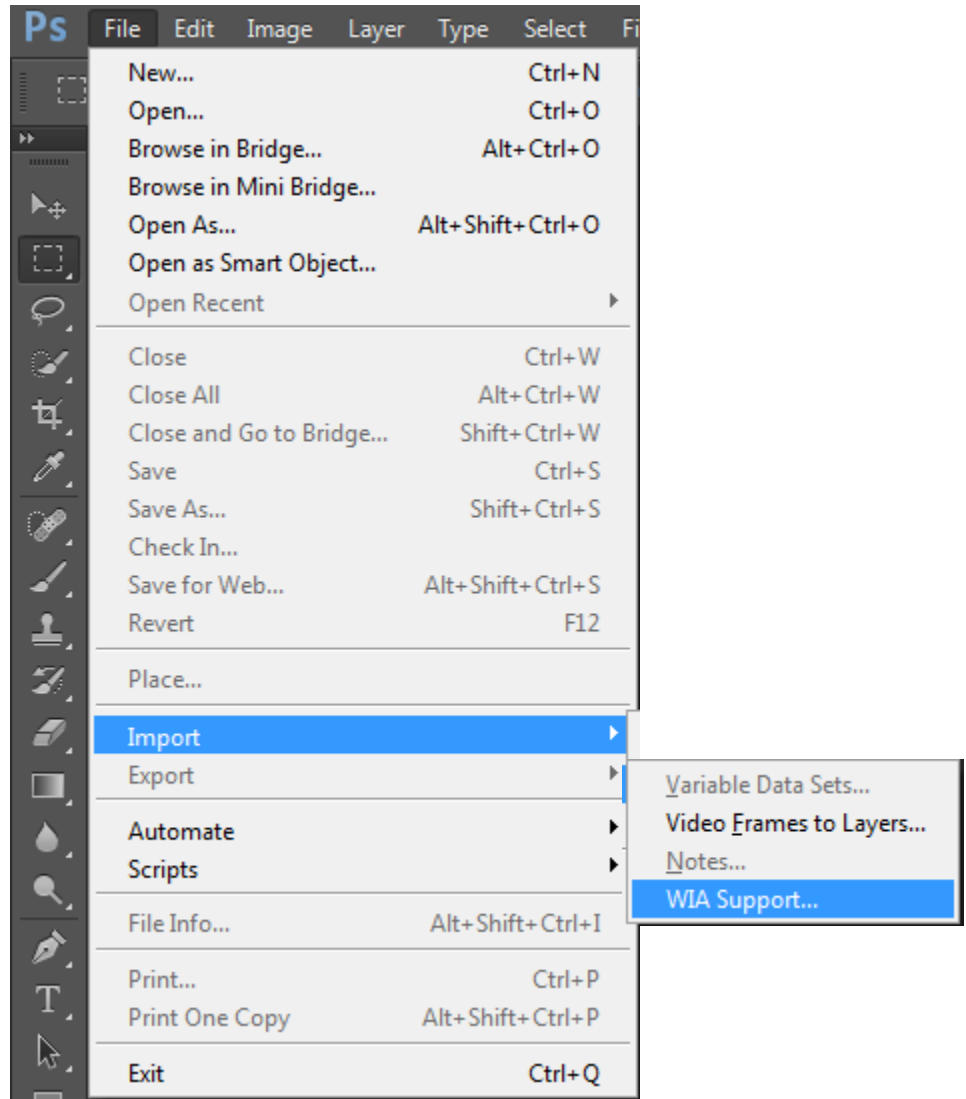


Open Photoshop

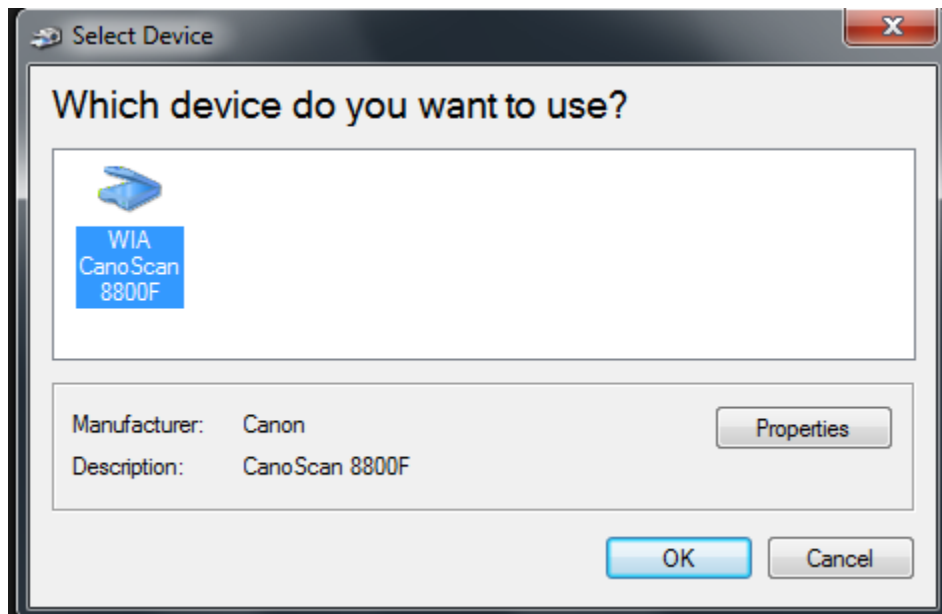


Go to File >

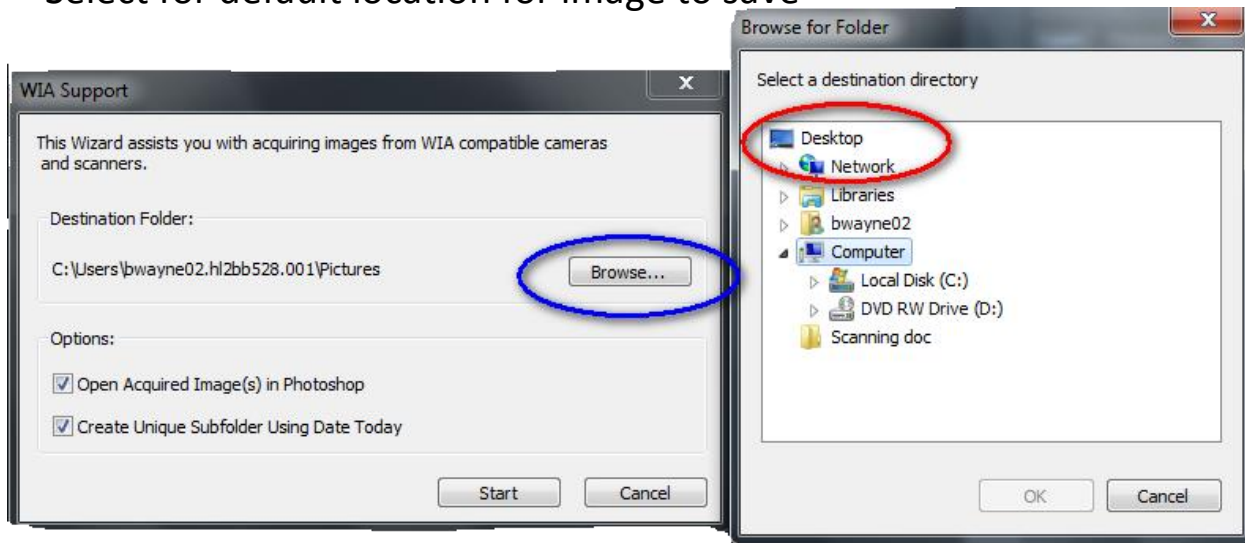
Import > WIA Support



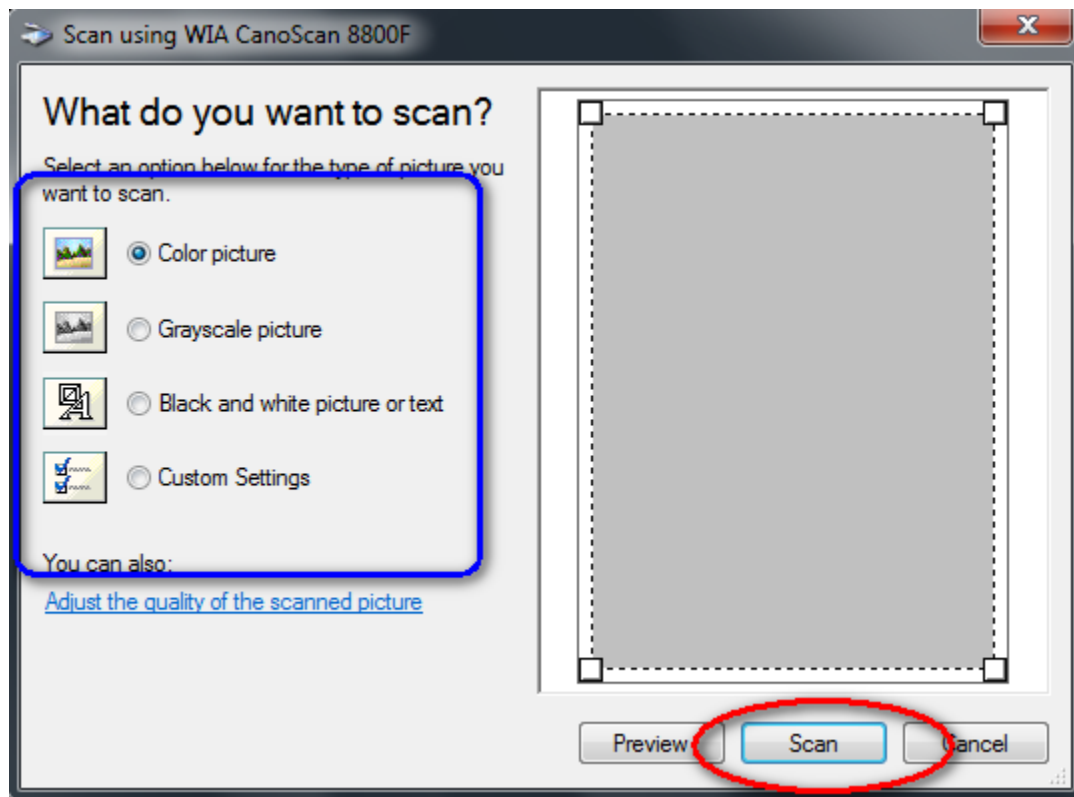
Select the appropriate scanner (Canon or HP)



Select for default location for image to save



Select type of scan based on color settings... located in BLUE



Next you can either Preview your scan or Scan image in on first attempt.

Now Save your scan using “Save AS...” under the file menu
When saving your scan:

1st Select Desktop for location so you can access it located on the left

2nd Use the drop down box beside format and select which file type you want to use. .jpeg is best format for file size

3^r Name your document and click Save

